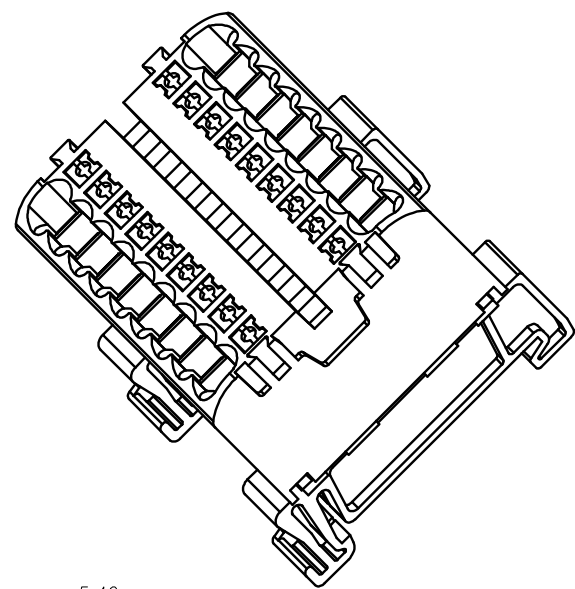
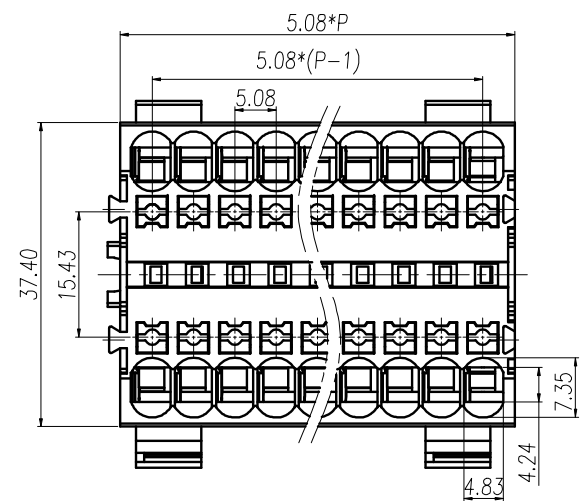
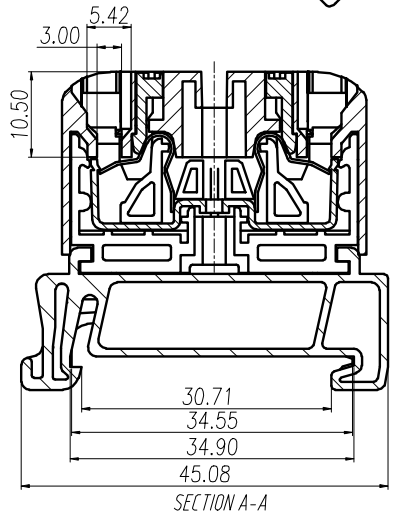
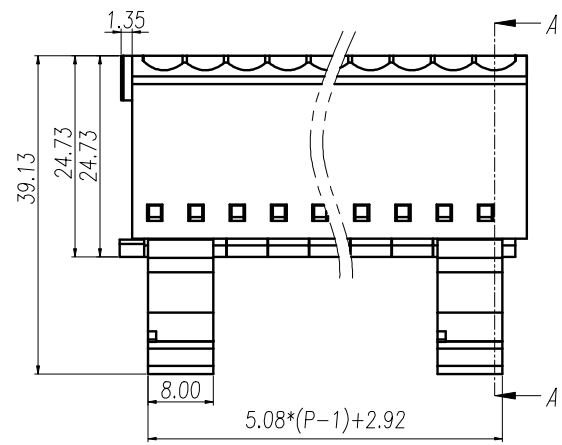


REVISION RECORD			
REV.	CONTENT	MOD.	DATE
①	初版发行		



- NOTES:**
1. Voltage Rating: 600V, Current Rating: 25A
 2. PITCH: 5.08mm
 3. Insulation Withstands Voltage: AC2500V/min
 4. Insulation Resistance: 500MΩ or more at DC1000V
 5. Using Temperature Range: -40℃ ~ +105℃
 6. Suitable Electric Wire: 28-12AWG



- 技术要求:**
1. 额定电压: 600V, 额定电流: 25A
 2. 间距: 5.08mm
 3. 耐电压值: AC 2500V/min
 4. 绝缘阻抗500兆欧
 5. 使用条件: -40℃ ~ +105℃
 6. 适用线规: 28-12AWG

7	卡脚弹片	6LD1B00025A2	2	黄铜	镀镍
6	卡脚塑胶件	6LD1I0002532	2	PA66-V0	
5	LD1-2.5-弹片	6LD1BDD025BV	2P	SUS301	不锈钢
4	LD1-2.5-导电件	6LD1BDD025AV	P	紫铜	镀镍
3	LD1-2.5-按钮	6LD1DS00253V	2P	PA66-V0	
2	LD1-2.5-盖板	6LD1C400253V	1	PA66-V0	
1	LD1-2.5-主体	6LD1A400253V	P	PA66-V0	
NO.	NAME OF PART	NO. OF PART	QTY	MATERIAL	NOTES
DES.	HH	DATE	2018/05/08	UNITS	MM
CHL.		DATE		SIZE	A4
APP.		DATE		SCALE	1:1
				DWG NO.	SP-1-6LD1A13
				TITLE	LD1-2.5/XXL-XP-40-01B
					LD1-2.5-成品

	pitch dimension			Nominal dimension					—
	over 0	over 6	over 10	over 0	over 30	over 60	over 100	over 150	
variable range	to 6	to 10	to 24	to 30	to 60	to 100	to 150		▱
Tolerance	±0.1	±0.15	±0.25	±0.2	±0.3	±0.5	±0.7	±1.0	⌒

上海联捷电气有限公司
Shanghai Linker Electric CO LTD