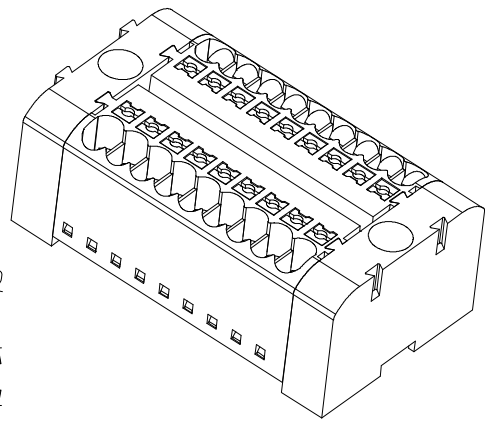
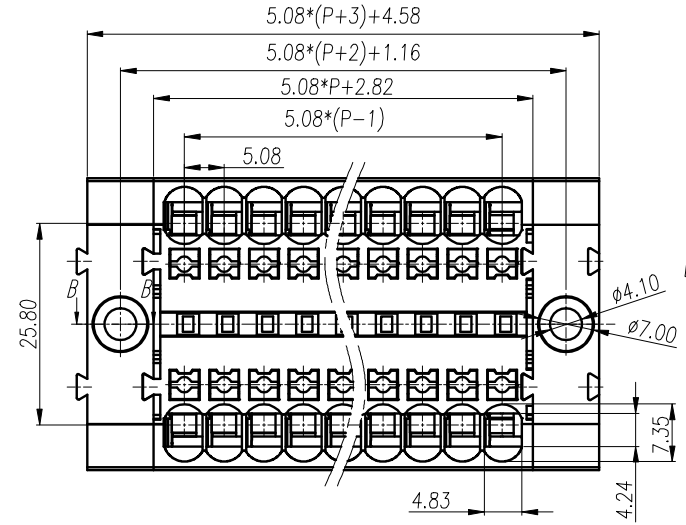
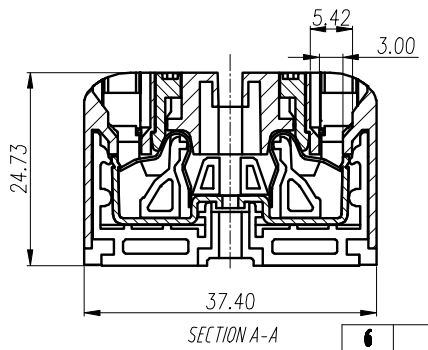
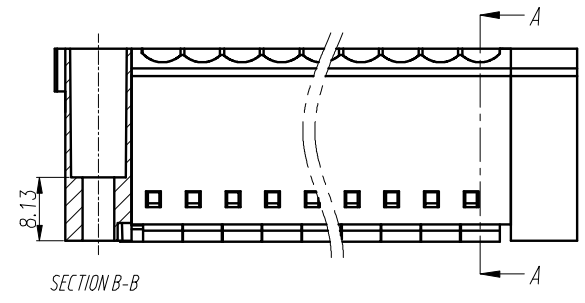


REVISION RECORD			
REV.	CONTENT	MOD.	DATE
①	初版发行		



- NOTES:**
1. Voltage Rating: 600V, Current Rating: 20A
  2. PITCH: 5.08mm
  3. Insulation Withstands Voltage: AC2500V/min
  4. Insulation Resistance: 500MΩ or more at DC1000V
  5. Using Temperature Range: -40℃ ~ +105℃
  6. Suitable Electric Wire: 28-12AWG



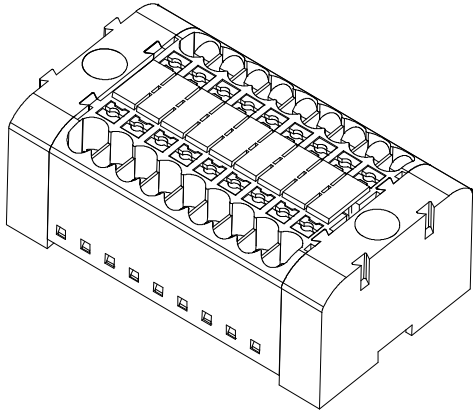
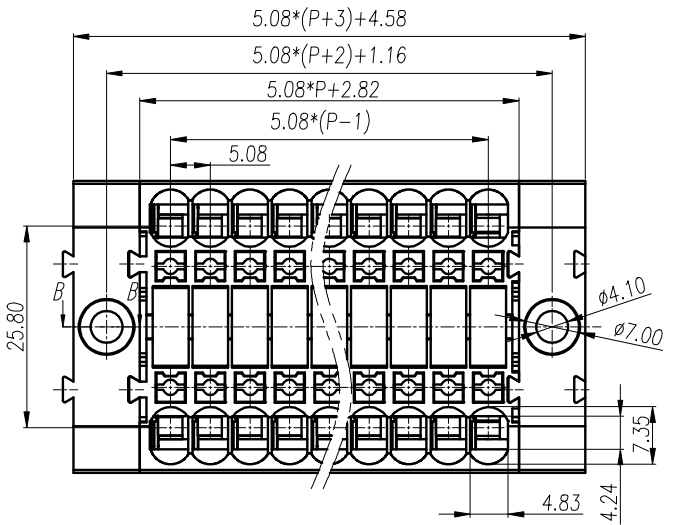
- 技术要求:**
1. 额定电压: 600V, 额定电流: 20A
  2. 间距: 5.08mm
  3. 耐电压值: AC 2500V/min
  4. 绝缘阻抗500兆欧
  5. 使用条件: -40℃ ~ +105℃
  6. 适用线规: 28-12AWG

	pitch dimension			Nominal dimension					—
	over 0	over 6	over 10	over 0	over 30	over 60	over 100	over 150	
variable range	to 6	to 10	to 24	to 30	to 60	to 100	to 150		□
Tolerance	±0.1	±0.15	±0.25	±0.2	±0.3	±0.5	±0.7	±1.0	○

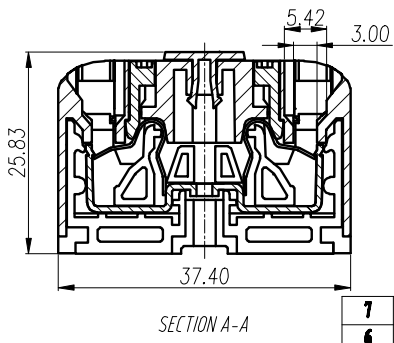
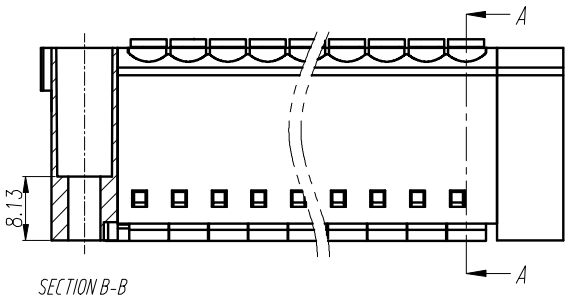
6	LD1-2_罩	GLD11400253Y	2	PA66-70	绿色
5	LD1-2_5-弹片	GLD1D0001AY	2P	SUS301	
4	LD1-2_5-导电件	GLD1D0002AY	P	紫铜	镀锡层
3	LD1-2_5-锁扣	GLD1A400204Y	2P	PA66-70	橘黄
2	LD1-2_5-XX壳体	GLD1C400203Y	1	PA66-70	绿色
1	LD1-2_5-主体	GLD1A400203Y	P	PA66-70	绿色
NO.	NAME OF PART	NO. OF PART	Q'TY	MATERIAL	NOTES
DES.	REV	DATE	2019/06/26	UNITS	MM
CHK.		DATE		SIZE	A4
APP.		DATE		SCALE	1:1
				DWG NO.	SP-1-GLD1A05
				TITLE	LD1M-2.5/XX-TY
					LD1M-2.5/XX-TY成品

**上海联捷电气有限公司**  
Shanghai Hlinker Electric Co., LTD

REVISION RECORD			
REV.	CONTENT	MOD.	DATE
①	初版发行		



- NOTES:**
1. Voltage Rating: 600V, Current Rating: 20A
  2. PITCH: 5.08mm
  3. Insulation Withstands Voltage: AC2500V/min
  4. Insulation Resistance: 500MΩ or more at DC1000V
  5. Using Temperature Range: -40℃ ~ +105℃
  6. Suitable Electric Wire: 28-12AWG

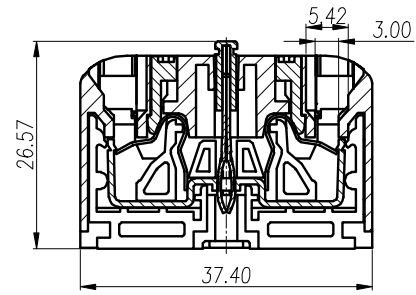
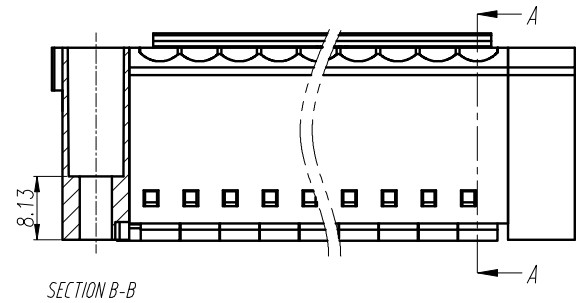
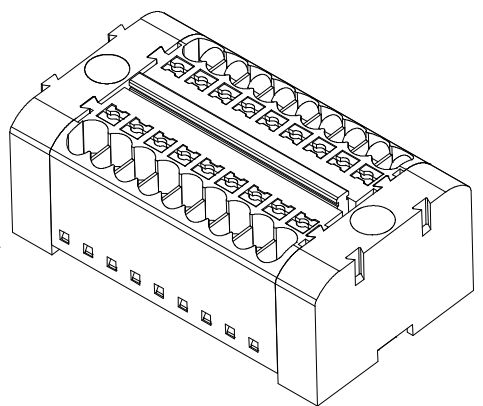
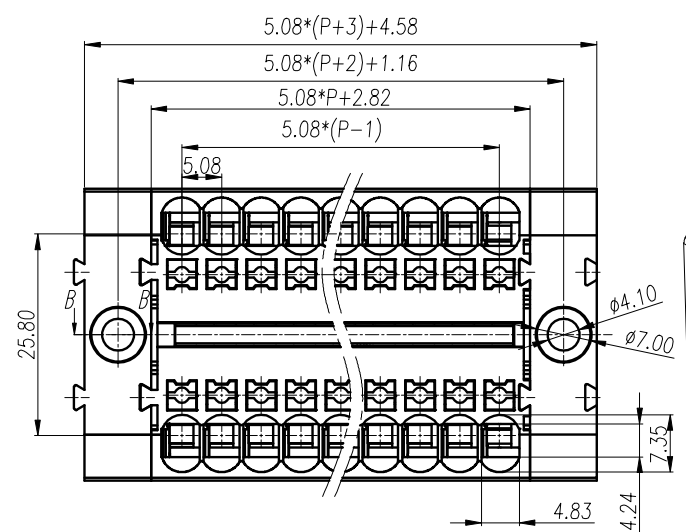


- 技术要求:**
1. 额定电压: 600V, 额定电流: 20A
  2. 间距: 5.08mm
  3. 耐电压值: AC 2500V/min
  4. 绝缘阻抗500兆欧
  5. 使用条件: -40℃ ~ +105℃
  6. 适用线规: 28-12AWG

	pitch dimension			Nominal dimension					—
	over 0	over 6	over 10	over 0	over 30	over 60	over 100	over 150	
variable range	to 6	to 10	to 24	to 30	to 60	to 100	to 150		□
Tolerance	±0.1	±0.15	±0.25	±0.2	±0.3	±0.5	±0.7	±1.0	○

7	ZMS-XP标识号	ZMS-XP	1	PA66-70	白色
6	LD1-2.5M	GLD11400253Y	2	PA66-70	绿色
5	LD1-2.5-弹片	GLD1D0001AY	2P	SUS301	
4	LD1-2.5-导电件	GLD1D0002AY	P	紫铜	镀锡层
3	LD1-2.5-螺母	GLD1A400204Y	2P	PA66-70	橘黄
2	LD1-2.5-壳体	GLD1C400203Y	1	PA66-70	绿色
1	LD1-2.5-主体	GLD1A400203Y	P	PA66-70	绿色
NO.	NAME OF PART	NO. OF PART	Q'TY	MATERIAL	NOTES
DES.	REV	DATE	2019/06/26	UNITS	MM
CHK.		DATE		SIZE	A4
APP.		DATE		SCALE	1:1
				DWG NO.	SP-1-GLD1A06
				TITLE	LD1M-2.5/XX-TY-00B
					REV: 00
				<b>上海联捷电气有限公司</b> Shanghai Hlinker Electric Co., Ltd.	

REVISION RECORD			
REV.	CONTENT	MOD.	DATE
①	初版发行		



- NOTES:**
1. Voltage Rating: 600V, Current Rating: 20A
  2. PITCH: 5.08mm
  3. Insulation Withstands Voltage: AC2500V/min
  4. Insulation Resistance: 500MΩ or more at DC1000V
  5. Using Temperature Range: -40℃ ~ +105℃
  6. Suitable Electric Wire: 28-12AWG

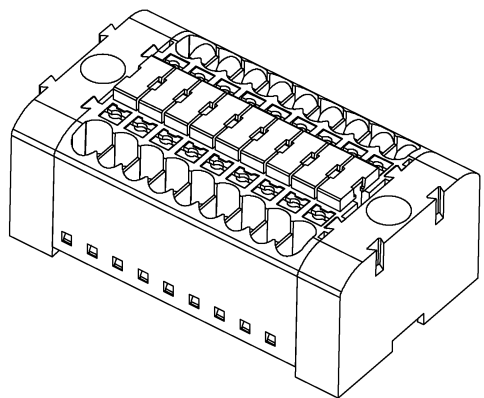
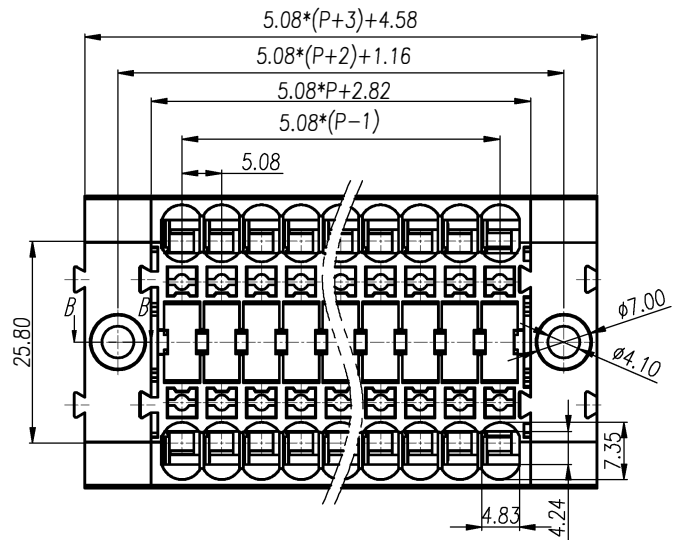
- 技术要求:**
1. 额定电压: 600V, 额定电流: 20A
  2. 间距: 5.08mm
  3. 耐电压值: AC 2500V/min
  4. 绝缘阻抗500兆欧
  5. 使用条件: -40℃ ~ +105℃
  6. 适用线规: 28-12AWG

	pitch dimension			Nominal dimension					—
	over 0	over 6	over 10	over 0	over 30	over 60	over 100	over 150	
variable range	to 6	to 10	to 24	to 30	to 60	to 100	to 150		◇
Tolerance	±0.1	±0.15	±0.25	±0.2	±0.3	±0.5	±0.7	±1.0	○

7	FBL-XX-5连接件	FBL-XX-5	1	PA66-40	红色
6	LD1-2.5M	6LD1I400253Y	2	PA66-Y0	绿色
5	LD1-2.5-弹片	6LD1B0001AV	2P	SUS301	
4	LD1-2.5-导电片	6LD1B0002AV	P	紫铜	镀锡
3	LD1-2.5-按钮	6LD1A400204Y	2P	PA66-Y0	橘黄
2	LD1-2.5-壳体	6LD1C400203Y	1	PA66-Y0	绿色
1	LD1-2.5-主体	6LD1A400203Y	P	PA66-Y0	绿色
NO.	NAME OF PART	NO. OF PART	Q'TY	MATERIAL	NOTES
DES.	BH	DATE	2019/06/26	UNITS	MM
CHK.		DATE		SIZE	A4
APP.		DATE		SCALE	1:1
				DWG NO.	SP-1-6LD1A07
				TITLE	LD1M-2.5/XX-XLX-YY
					LD1M-2.5/XX-XLX-YY成品



REVISION RECORD			
REV.	CONTENT	MOD.	DATE
①	初版发行		

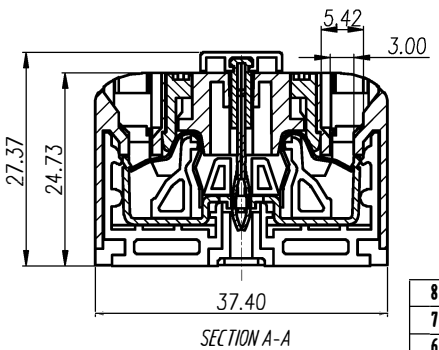
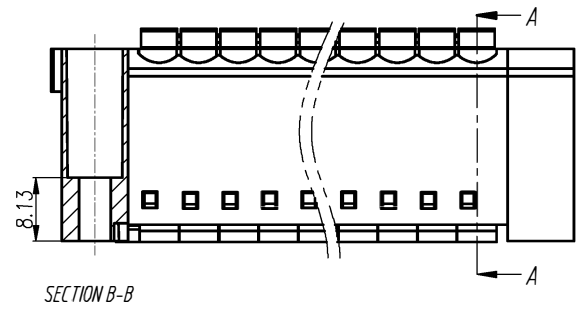


**NOTES:**

1. Voltage Rating: 600V, Current Rating: 20A
2. PITCH: 5.08mm
3. Insulation Withstands Voltage: AC2500V/min
4. Insulation Resistance: 500MΩ or more at DC1000V
5. Using Temperature Range: -40°C ~ +105°C
6. Suitable Electric Wire: 28-12AWG

**技术要求:**

1. 额定电压: 600V, 额定电流: 20A
2. 间距: 5.08mm
3. 耐电压值: AC 2500V/min
4. 绝缘阻抗500兆欧
5. 使用条件: -40°C ~ +105°C
6. 适用线规: 28-12AWG



	pitch dimension			Nominal dimension					—
	over 0	over 6	over 10	over 0	over 30	over 60	over 100	over 150	
variable range	to 6	to 10	to 24	to 30	to 60	to 100	to 150		◇
Tolerance	±0.1	±0.15	±0.25	±0.2	±0.3	±0.5	±0.7	±1.0	0.05/10

8	ZBL5-XXP标记号	ZBL5-XXP	1	PA66-V0	红色
7	FBL-XX-5连接件	FBL-XX-5	1	PA66-V0+镀镍磷青铜	红色
6	LD1-2.5M	6LD1I400253V	2	PA66-V0	绿色
5	LD1-2.5-弹片	6LD1B0001AV	2P	SUS301	
4	LD1-2.5-导电件	6LD1B0002AV	P	紫铜	镀厚锡
3	LD1-2.5-按钮	6LD1A400204V	2P	PA66-V0	橘黄
2	LD1-2.5-XX壳体	6LD1C400203V	1	PA66-V0	绿色
1	LD1-2.5-主体	6LD1A400203V	P	PA66-V0	绿色
NO.	NAME OF PART	NO. OF PART	QTY	MATERIAL	NOTES
DES.	HH	DATE	2019/06/26	UNITS	MM
CHK.		DATE		SIZE	A4
APP.		DATE		SCALE	1:1
				DWG NO.	SP-1-6LD1A08
				TITLE	LD1M-2.5/XX-XXI-TY-01B
					LD1M-2.5/XX-XXI-TY-01B-成品

**上海联捷电气有限公司**  
Shanghai Linker Electric Co., Ltd