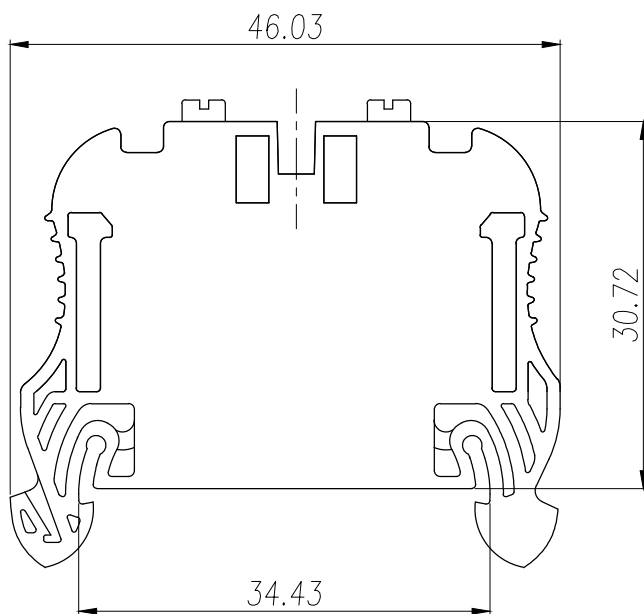
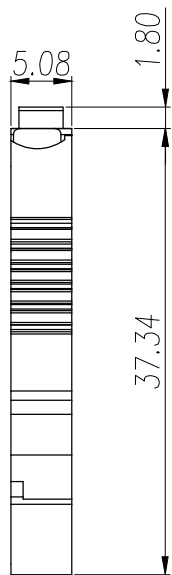
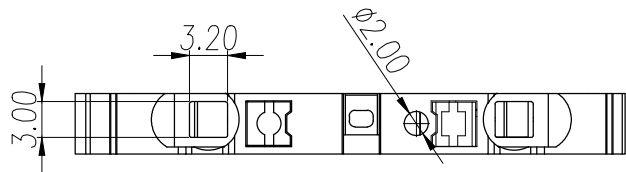


REVISION RECORD			
REV.	CONTENT	MOD.	DATE
△/0	初版发行		



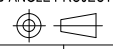

NOTES:

1. Voltage Rating: 600V, Current Rating: 24A
2. PITCH: 5.08mm
3. Insulation Withstands Voltage: AC2000V/min
4. Using Temperature Range: -40°C ~ +105°C
5. Suitable Electric Wire: 24-12AWG

技术要求:

1. 额定电压: 600V, 额定电流: 24A
2. 间距: 5.08mm
3. 耐电压值: AC 2000V/min
4. 使用条件: -40°C ~ +105°C
5. 适用线规: 24-12AWG

	pitch dimension			Nominal dimension					— /
	over 0	over 6	over 10	over 0	over 30	over 60	over 100	over 150	
variable range	to 6	to 10	to 24	to 30	to 60	to 100	to 150		□ ○
Tolerance	±0.1	±0.15	±0.25	±0.2	±0.3	±0.5	±0.7	±1.0	0.05/10

4	LD1-2.5按钮	6LD1D400203V-1	2P	PBT	橘黄色
3	UD2.5G分体弹片	F2A0UD25GBV	2P	不锈钢	
2	LD1-2.5导电件	6LD1B0002AV	P	紫铜	
1	UD2.5主体	60UDA10243V	P	PA66	灰色
NO.	NAME OF PART	NO. OF PART	MATERIAL		NOTES
DES.	CMZ	DATE 2024/08/03	UNITS mm	THIRD ANGLE PROJECTION	
CHK.		DATE	SIZE A4		
APP.		DATE	SCALE 1:1	DWG NO. SP-60UDA1	REV: V0
 上海联捷电气有限公司 Shanghai Elinker Electric CO., LTD				TITLE	UD2.5-110-00A UD2.5-110-00A产品