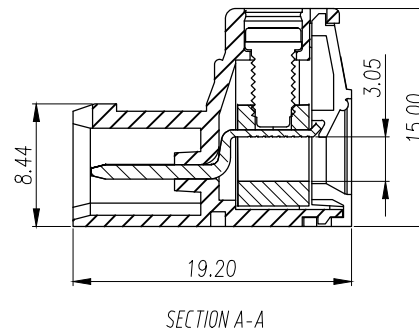
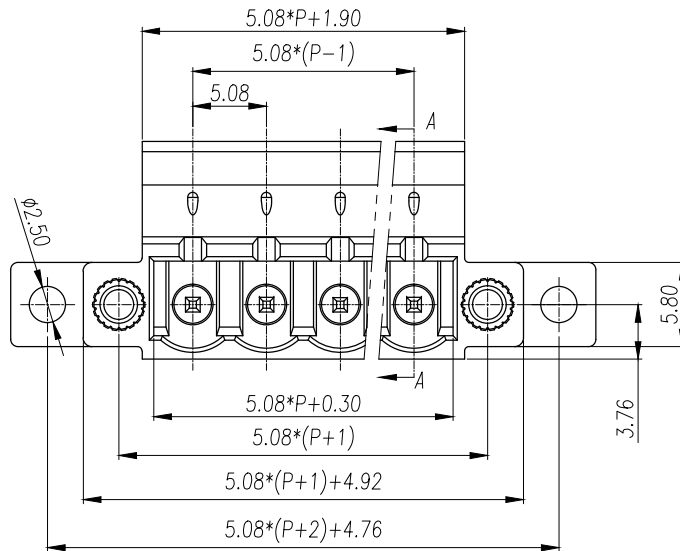
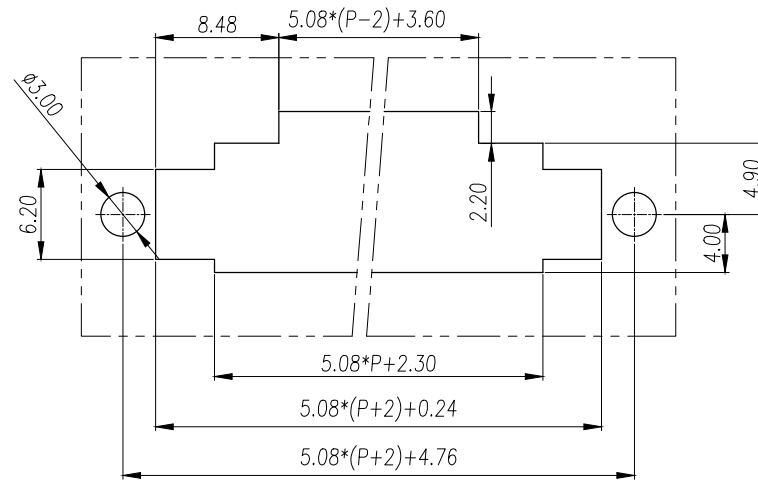
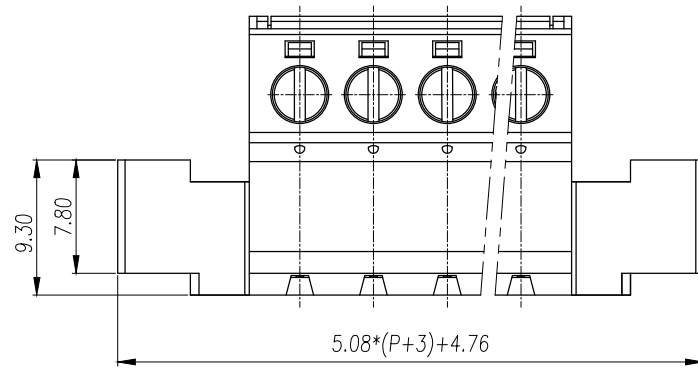


REVISION RECORD

REV.	CONTENT	MOD.	DATE
△	初版发行		



NOTES:

Pitch : 5.08mm
 Rated Voltage : 300V
 Rated Current : 15A
 Withstand Voltage :
 AC2500V for 1 minute
 Using Temperature Range :
 -40°C ~ +105°C
 Wire range : 24~12 AWG
 Screw Torque Value : 0.5 N.m

技术要求:

间距: 5.08mm
 额定电压: 300V
 额定电流: 15A
 耐电压值: AC2500V/min
 使用条件: -40°C ~ +105°C
 适用线规: 24~12 AWG
 螺丝扭矩: 0.5 N.m

	pitch dimension			Nominal dimension					—
	over 0	over 6	over 10	over 0	over 30	over 60	over 100	over 150	
variable range	to 6	to 10	to 24	to 30	to 60	to 100	to 150		▭
Tolerance	±0.1	±0.15	±0.25	±0.2	±0.3	±0.5	±0.7	±1.0	○

6.	LZ1-耳朵螺母	SM00B250000V	2	黄铜			
5.	LC10-5.08-焊脚	1011B00010V	P	紫铜	镀雾锡		
4.	LC1-5.08-螺丝	SPOYA305301V	P	碳钢	三价铬钝化彩锌		
3.	LC1-5.08-铜方块	F1A0BLC5083V	P	黄铜	镀镍		
2.	LC1-5.08-盖板	1001COVXXAV	1	PA66-V0			
1.	LC10MGC1-5.08-本体	1165M0VXXAV	1	PA66-V0			
NO.	NAME OF PART	NO. OF PART	Q'TY	MATERIAL	NOTES		
DES.	HH	DATE	2019/11/07	UNITS	MM	THIRD ANGLE PROJECTION	SHEET
CHK.		DATE		SIZE	A4	⊕	1 of 1
APP.		DATE		SCALE	1:1	DWG NO.	SP-2-1011003
						REV:	V0



上海联捷电气有限公司
 Shanghai Elinker Electric CO.,LTD

TITLE LC10MGC1-5.08-XXP-1Y-00A
 LC10MGC1-5.08-成品